

**ATLAS**<sup>®</sup>

**STRUCTURAL  
SYSTEMS**

1156



# Contents

Page 4 ..... Roof Systems  
Page 6 ..... Architectural Ceilings  
Page 8 ..... Bonus Living Space  
Page 10 ..... Wall Systems  
Page 12 ..... Floor Systems  
Page 14 ..... Process & Contact Information





**ROOF  
SYSTEMS**



**WALL  
SYSTEMS**



**FLOOR  
SYSTEMS**



**THE TOTAL  
STRUCTURAL SOLUTION**





# ROOF SYSTEMS

## A DISTINCTIVE ROOFLINE

The roof is a critical component of the architectural look, aesthetic appeal and livability of a home. When it is well planned and designed, the roof can greatly influence the functionality of the structure.



## FIRST IMPRESSIONS COUNT

Perhaps you cannot judge a book by its cover, but you can and do judge a structure by its rooflines. In most cases, the type of roof determines the style and image projected by a home. Consider how the roof drives the first impressions made by these elegant homes.



## Craftsman Style

The over-extended eaves of a Craftsman roof lend themselves to having spacious porches on the front with lots of decorative details.



## Modern Style

Modern structural design is often characterized by the flat roof & low slopes as they create long horizontal lines, similar to the wide horizon seen in nature.





### Hip Style

The hip roof provides an elegant look where all sides are sloped. Combined with other roof styles, the hip can greatly improve curb appeal of a home.



### Shed Style

The shed style roof has a single slope that can vary in steepness depending on the design of the home.



### Colonial Style

Colonial style homes have a traditional elegance that is bold and beautiful. They are usually two stories high and have grand front entrances with tall columns.



### Cape Cod Style

A cape cod style roof has an asymmetrical design with a steep pitch to the roof on the back with a shallow pitch on the front. These homes are often seen with dormers.

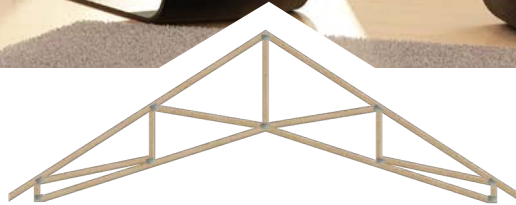




# ARCHITECTURAL CEILINGS

## ENGINEERED FOR STYLE

Stylish elements such as cathedral, vault, tray, and barrel ceilings make decorative design a matter of imagination. These styles are made possible using engineered trusses.



### Cathedral Ceiling

Created with scissor trusses, low-sloped cathedral ceilings bring a sense of openness, even grandeur, to a home.



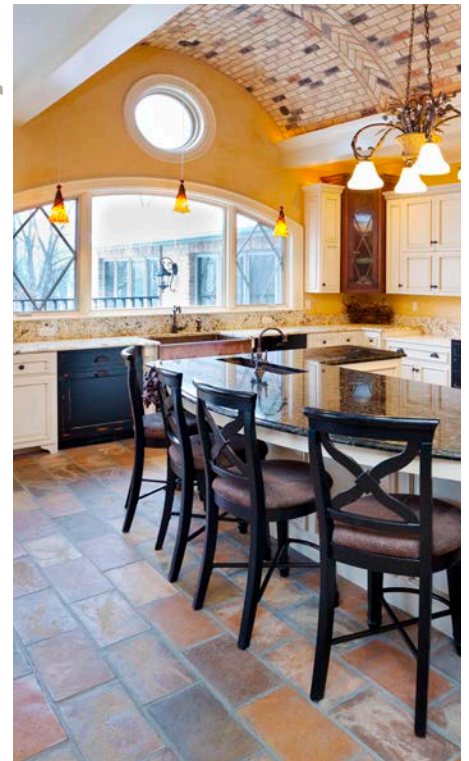
### Vault Ceiling

Sloping upward from one side, vaulted ceilings add drama to otherwise ordinary rooms.



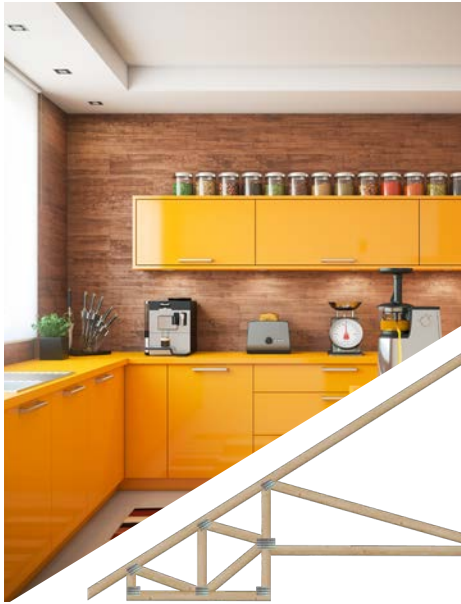
### Barrel Ceiling

Barrel trusses make it possible to have a rounded cove ceiling, giving architectural interest to the room.



## ENGINEERED FOR ATMOSPHERE

A high ceiling is uplifting and makes a small room feel more spacious. A sloped ceiling forces the eye upwards, emphasizing a light and open atmosphere.



### Vertical Tray Ceiling

The vertical tray ceiling is often framed with one or more stepped square edges going from the wall to the flat ceiling.



### Tray Ceiling

The tray ceiling has a flat center with sides sloping in from the walls, adding dramatic effect to any space.



### Flat Ceiling

With flat bottom chords, common trusses provide cost effective solutions for most residential homes.

## THE SKY'S THE LIMIT

Engineered trusses eliminates the need for interior load-bearing walls. This gives an architect or designer great flexibility in creating dramatic wall and ceiling shapes that can be entirely decorative.





# BONUS LIVING SPACE

## EXTRA SPACE MEANS ENHANCED LIVABILITY

Engineered trusses can improve space efficiency by creating bonus living space in the gable roof style courtesy of attic and dormer trusses.

### Attic Room

The attic truss is popular over garages or anywhere people want to increase living or storage space without adding another floor to their structure.



### Bonus Living Space

The addition of a web floor in the attic truss increases structural strength allowing longer spans and larger interior room space.



### Cape Cod

Provides the structural strength to open nearly every cubic foot of volume beneath the ceiling.



## CREATE EXTRA LIVING SPACE

Engineered roof trusses can be designed to provide extra room for storage or bonus living space such as: an extra bedroom, loft, office and more.



### Full Attic Room

This truss system allows full use of the entire width of your bonus living space.



### Dormers

The addition of dormers to your attic room expands the living space and adds aesthetic appeal to the roof plane.



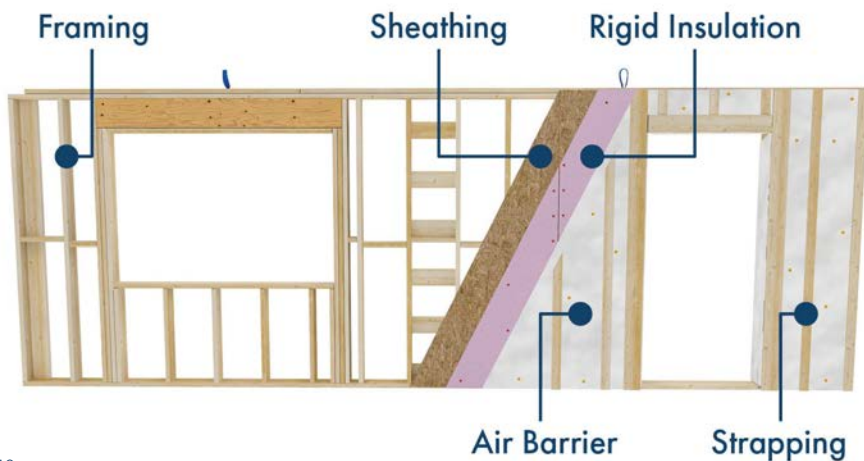




# WALL SYSTEMS

## DESIGNED FOR VERSATILITY

Today's homes are using tall, multi-story walls with many openings for specialty windows and doors. Your builder should use engineered studs, columns and beams for tall walls to prevent the bowing and flexing of the exterior walls.



## PREFABRICATED WALL PANELS

Prefabricated wall panels offer many significant advantages to conventional stick-framing and contribute to job-site efficiency.

Our panels are:

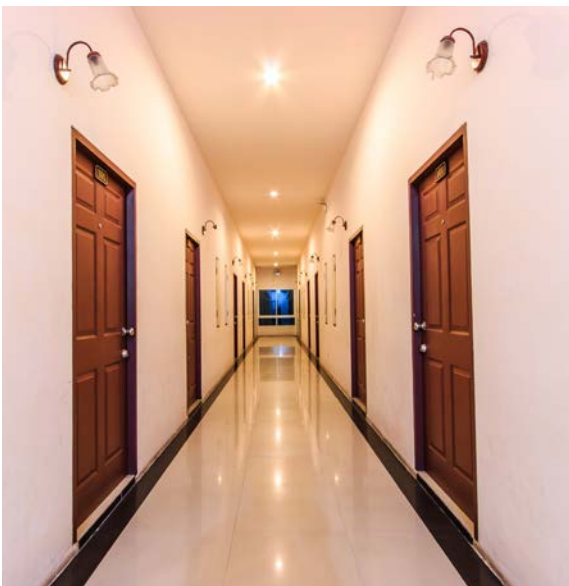
- built in an interior controlled environment
- installed with insulated headers at the factory
- precision designed and manufactured to meet exact dimensions
- pre-cut with the correct window and door openings for ease of installation





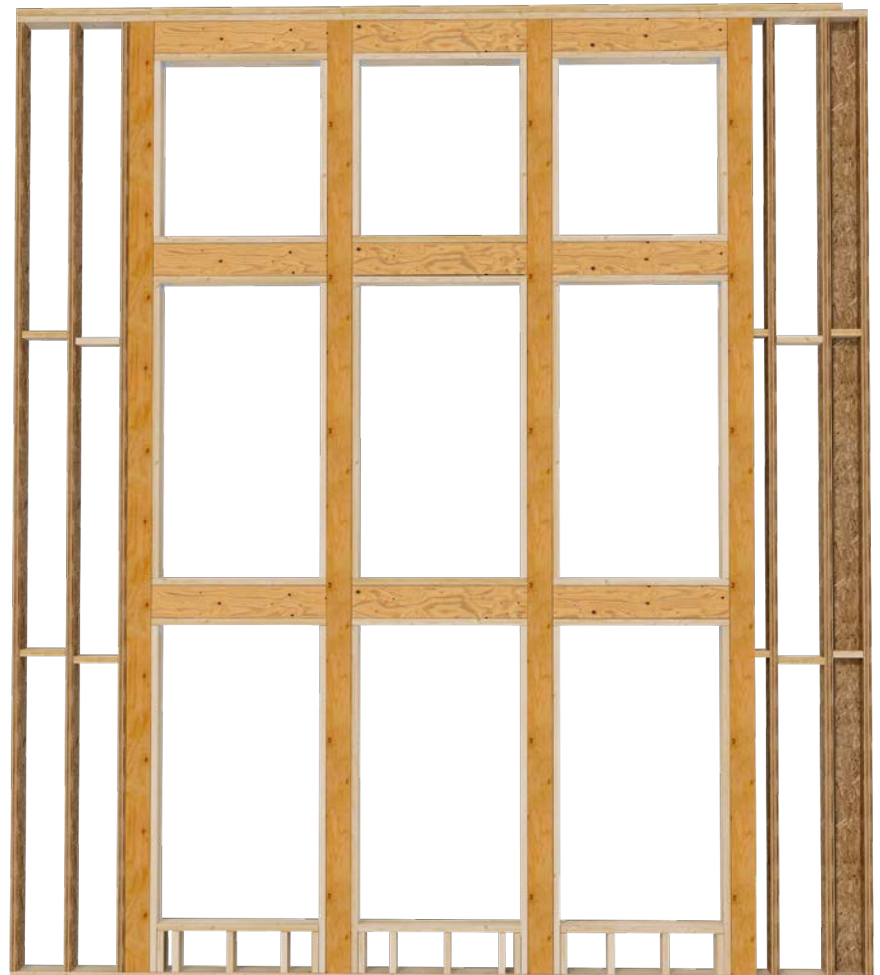
**Tall Walls**

When roof loads are increased by snow buildups or the forces of wind, Laminated Veneer Lumber (LVL) offers strength and security.



**Long Straight Walls**

By using engineered lumber in these long corridors, the structure is ensured to stay straight.



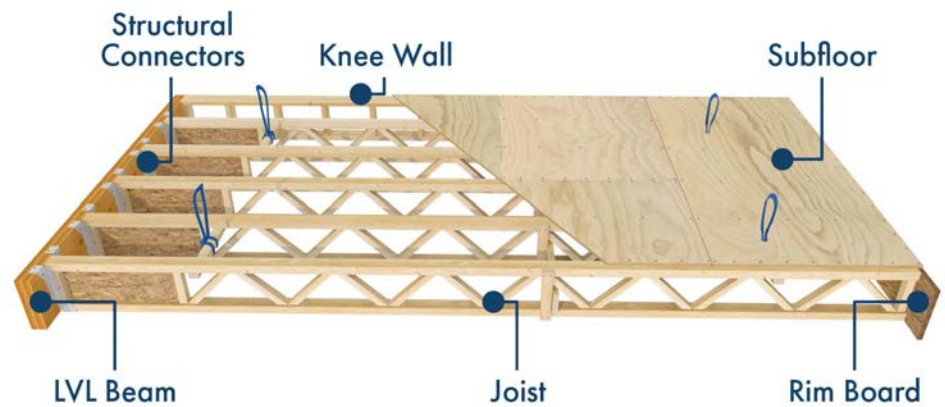




# FLOOR SYSTEMS

## ENGINEERED FOR OPEN CONCEPTS

Supporting floor loads is just as important as holding up the roof. Open-span construction allows great flexibility in design. With an engineered floor system, wall placement allows floor layouts that ordinary framing could not achieve.

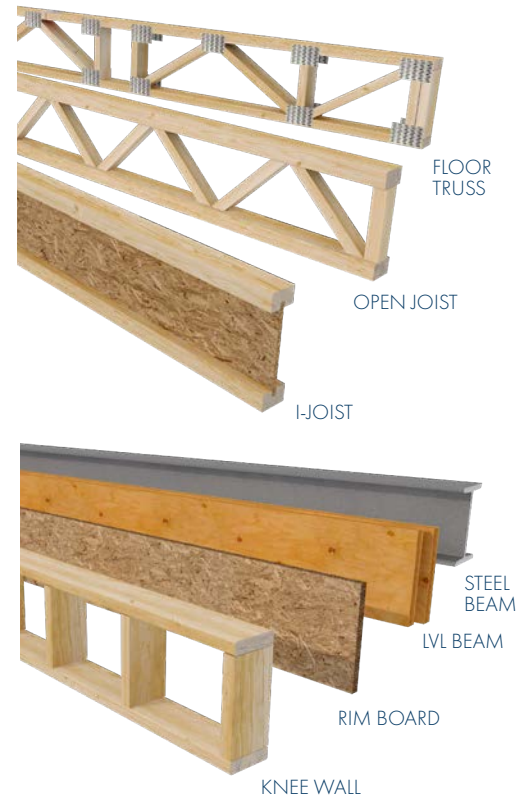


## PREFABRICATED FLOOR PANELS

Prefabricated Floor Panels are manufactured in a controlled environment using engineered wood products. They offer cost-saving benefits and higher quality over conventional building techniques.







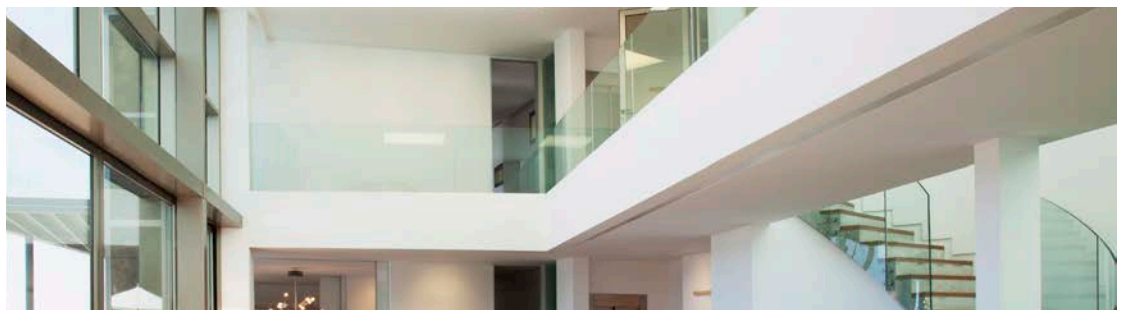
**ENGINEERED TO SUPPORT POINT LOADS**

Engineered floor systems make the choice of floor finish materials essentially unrestricted by weight concerns. Ceramic, slate, and other heavy floor coverings are easily supported by engineered floor systems.



**Cantilevered Balconies**

Atlas helps meet the architectural challenges presented by today's open floor plans. Our engineered beams have the rigidity and load-bearing strength to support your most ambitious plans.







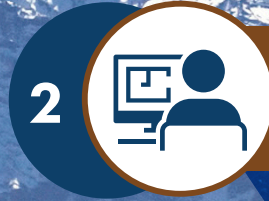
# PROCESS



1

## PROJECT OVERVIEW

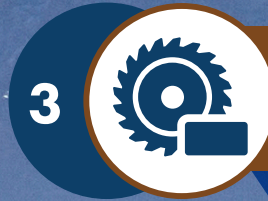
Let us add value to your project.



2

## DESIGN

Design for peace of mind.



3

## PRODUCTION

Integrated for efficiency and precision.



4

## DELIVERY

Being efficient & on-time is what we do.

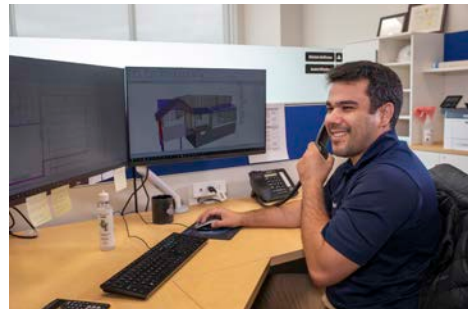


5

## INSTALLATION SUPPORT

Support is the name of the game.





CALL TODAY 1-(877)-422-1344  
OR VISIT **ATLASWAY.CA**

FOLLOW  
US ON







**CONTACT US TODAY!**  
1-(877)-422-1344 OR  
[ATLASWAY.CA](http://ATLASWAY.CA)